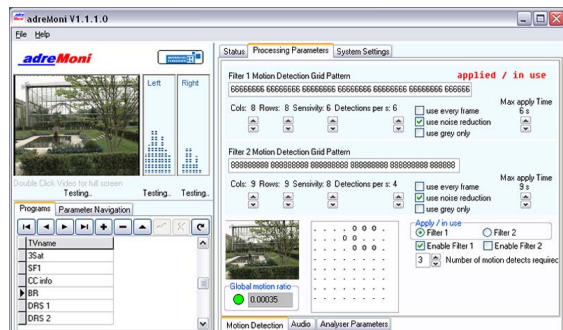


# adreMoni

## Automatic CATV Monitoring System

**adrenio**



- CATV RF input for PAL and DVB channel monitoring
- Professional digital receiver (IRD) with two DVB-CI slots for decoding scrambled channels
- Connection of IRD and server by high quality S-video and audio cables (symmetric)
- Audio analysis by Fast Fourier Transformation (FFT), audio levelling information (VU-meter)
- Video analysis by state-of-the-art motion detection
- Configurable reporting of results
- Dynamic tests to optimize cycle time
- Automatic logging and notification in case of special events (info, warning, alarm, alarm stopped)
- Notification by e-mail (SMTP) and/or SNMP
- Remote Access
- Video and audio remote access by Live Network Streaming (f.i. for Windows Media Player)
- Allows manual and automatic monitoring

adreMoni, the automatic monitoring system for CATV-operators, monitors the CATV network for analogue and digital programs on the RF-level. adreMoni includes a state-of-the-art analysis of the video and audio signals and allows different filter settings. Alarms will be logged and sent. A DVB analyser with a built-in decoder is providing a complete analysis. The system has remote access and can be used at any place in the CATV network.

- DVB-analyzer to
  - decode DVB based signals from the IRD digital output (ASI), including HDTV
  - display the DVB tables
  - decode Video and Audio (MPEG-2, MPEG-4, H-264 – SD and HD)
  - Measure the TR 101 290 standards
  - Analyze PCR
- Support of different QAM modes and symbol rates
- Individual monitoring of digital signals with multiple audio streams
- Monitoring of pure DVB audio-channels
- Number of channels configurable at any time
- Measurement cycles configurable at any time
- Measurement cycles configurable for analysis
- Individual time frames for monitoring the individual channels
- Display of decoded video (PAL and DVB)

adreMoni's monitoring features can be configured to customer request.

adreMoni includes a 19" server, a professional receiver (QAM-IRD, 19") and can be equipped with a DVB-Analyzer.

### Specification:

- RF-input range: 48MHz bis 862 MHz, IEC-connectors
- QAM-modes: 64, 256, symbol rates: 6.900 and 6.875 MS/s
- 10 BaseT, 100 BaseT, 1000 BaseT LAN-connections
- Operating system: MS-Win XP-Professional
- Power: 100...230 Volt, 50/60 Hz
- S-Video connection between IRD and Server
- Stereo Audio connection between IRD and Server
- DVB-ASI connector: BNC, 75 Ω
- Graphic User Interface
- Size: W:19", H: 1 U Rack plus 1 U Rack, D: ca. 65cm

For additional info, please contact:

Adrenio GmbH, 8103 Unterengstringen, Switzerland

Phone +41 43 305 8245, Fax +41 43 305 8246

[info@adrenio.com](mailto:info@adrenio.com)

[www.adrenio.com](http://www.adrenio.com)